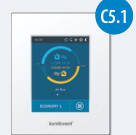
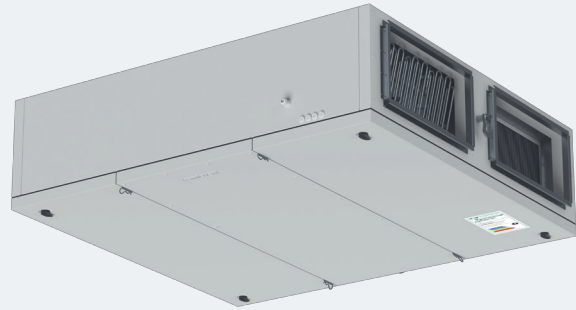


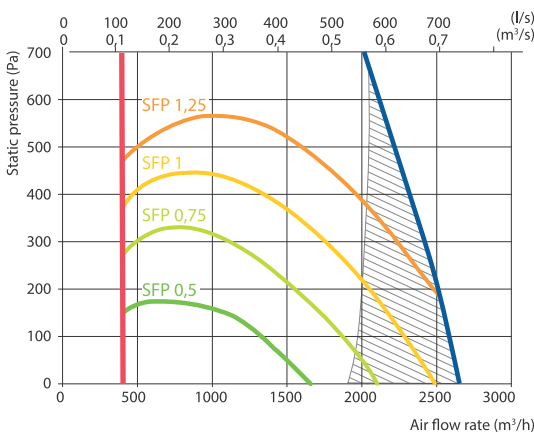
Verso CF 2000 F C5

Nominal air flow according to ErP 2018, m ³ /h	1975
Nominal air flow according to ErP 2018, l/s	549
Electric air heater capacity, kW / Δt, °C	7,5/8,5
Supply voltage HE, V	3~400
Supply voltage HW, V	1~230
Maximal operating current HE, A	16,6
Maximal operating current HW, A	11,7
Power supply cable E, mm ²	5x2,5
Power supply cable W, mm ²	3x1,5
Electric power input of the fan drive at maximum flow rate, W	850
Noise power level, L _{WA} , dB(A)	55
Noise pressure level, L _{pA} , dB(A), (3 m)	44
Filters dimensions BxHxL, mm	800x375x96
Unit dimensions BxHxL, mm	1600x480x1750
Panel thickness, mm	50
Maintenance space, mm	550
Unit weight, kg	235

NEW



Performance



Does not conform to ErP2018 requirements

Accessories

Closing damper	SRU-M-600x300+LF24/LM24
Silencer	ODA/EHA STS-BQUNBM-700x400-700-S SUP/ETA STS-IB6GBC-700x400-1250-S
Water heater	SVK-700x400-2
PPU	PPU-HW-3R-15-1,6-W2
Water cooler	DCW-2,0-13
2-way valve	VVP47.20-4,0+SSF161.05HF
DX cooler	DCF-2,0-14
Cooling unit	MOU-48HFN8a+KA8140

Mounting positions



Temperature efficiency

	Winter					Summer		
Outside temperature, °C	-23	-15	-10	-5	0	25	30	35
After heat exchanger, °C	14,5	15,4	15,9	16,7	17,7	22,6	23,5	24,5

Indoor +22 °C, 20 % RH

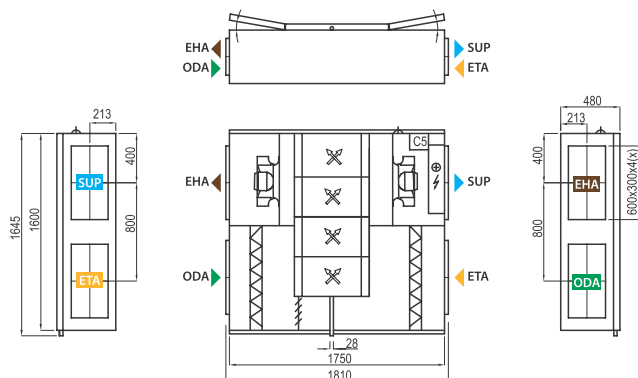
Hot water duct air heater *

	Winter		
Water temperature in/out, °C	80/60	70/50	60/40
Capacity, kW	5,0	5,0	5,0
Flow rate, dm ³ /h	221	220	219
Pressure drop, kPa	1,0	1,0	1,0
Temperature in/out, °C	14,5 / 22,0		
Maximal capacity, kW	22,5	18,0	13,4
Connection, "	¾		

* Option

Shown as right (R1)

View from inspection side



Shown as left (L1)



▶ ODA – outdoor intake ▶ SUP – supply air ▶ ETA – extract indoor ▶ EHA – exhaust air