

# Verso S 1300 F C5

Nominal air flow, m <sup>3</sup> /h	1347
Nominal air flow, l/s	374
Electric power input of the fan drive at reference flow rate, W	350
Filters dimensions BxHxL, mm	558x287x46
Unit dimensions BxHxL, mm	700x350x893
Panel thickness, mm	50
Maintenance space, mm	400
Unit weight, kg	46



## Acoustic data

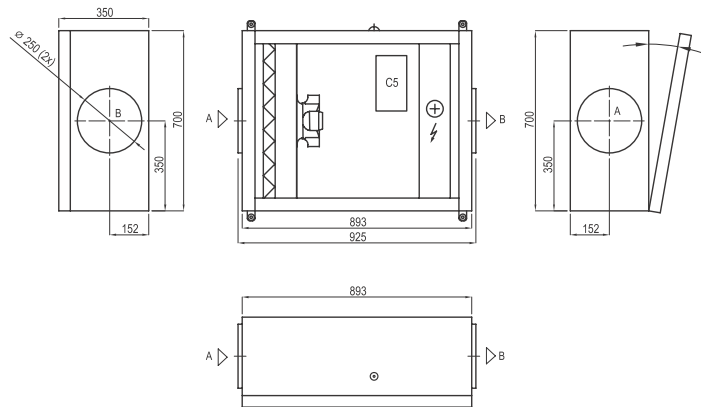
A-weighted sound power level  $L_{WA}$ , dB(A)  
at nominal flow rate

Supply inlet	74
Supply outlet	80
Casing	56

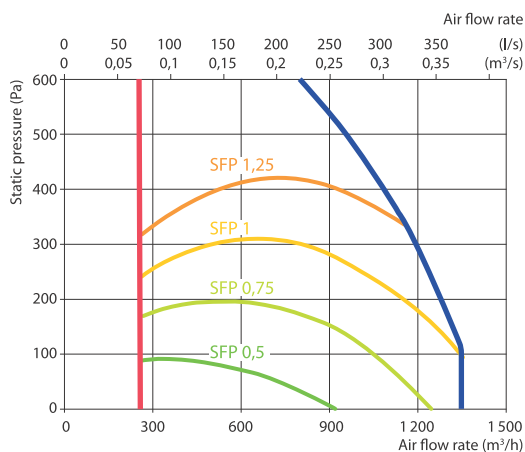
A-weighted sound pressure level  $L_{PA}$ , dB(A)

10 m<sup>2</sup> normally isolated room, distance from casing – 3 m.

Surroundings	46
--------------	----



## Performance



\* Compliance to ErP2018 requirements check with the selection program.

## Accessories

Closing damper	AGUJ-M-250+LF24/LM24
Silencer	A AGS-250-50-900-M
	B AGS-250-50-1200-M
PPU	PPU-HW-3R-15-2.5-W2
Air heater-cooler	DCW-1,4-9
2-way valve	VVP47.20-4,0+SSP61
DX cooler	DCF-1,4-10
Cooling unit	MOU-36HFN8+KA8243

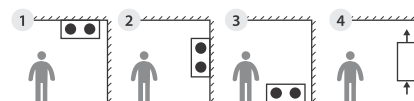
## Technical data

Supply air handling unit	Supply voltage, V	Air heater capacity, kW	Maximal operating current, A	$\Delta T$ , °C
Verso S 1300 F-HE/9	3~400	9,0	15,7	19,5
Verso S 1300 F-HE/15	3~400	15,0	24,4	32,6
Verso S 1300 F-HW	1~230	–	3	–

## Hot water air heater

Water temperature in/out, °C	80/60	70/50	60/40
Capacity, kW	10,7	8,9	7
Flow rate, dm <sup>3</sup> /h	471	389	303
Pressure drop, kPa	1,9	1,4	1
Temperature in/out, °C	-5 / 18,6	-5 / 14,6	-5,0 / 10,3
Maximal capacity, kW	10,7	8,9	7
Connection, "		½	

## Mounting positions



with water heater only